



DATA
FOR NOW

Accelerating
implementation
of Data For Now
initiative



United Nations

Department of Economic and Social Affairs
Statistics



THE WORLD BANK
IBRD • IDA | WORLD BANK GROUP
Development Economics • Data

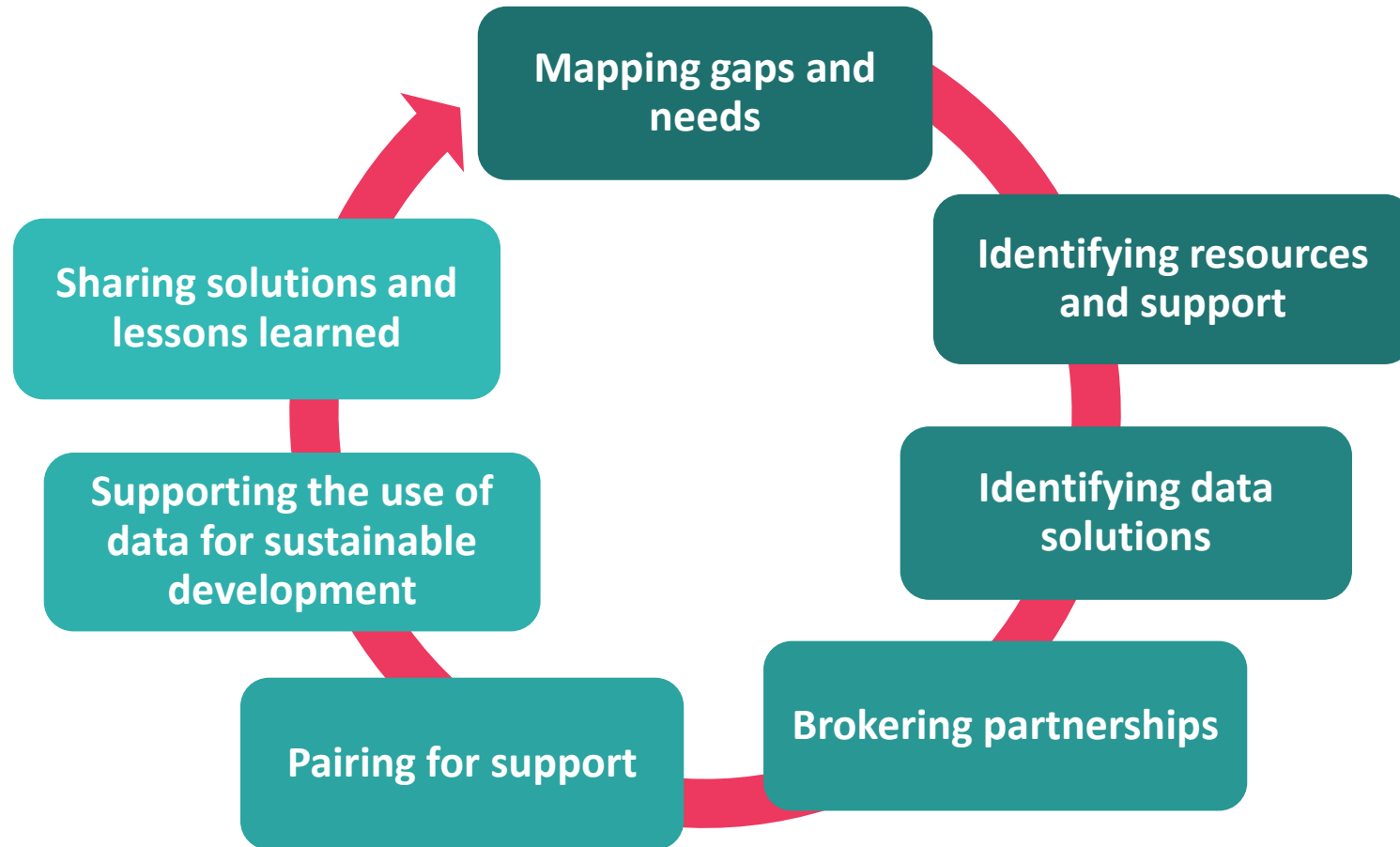


Global Partnership
for Sustainable
Development Data

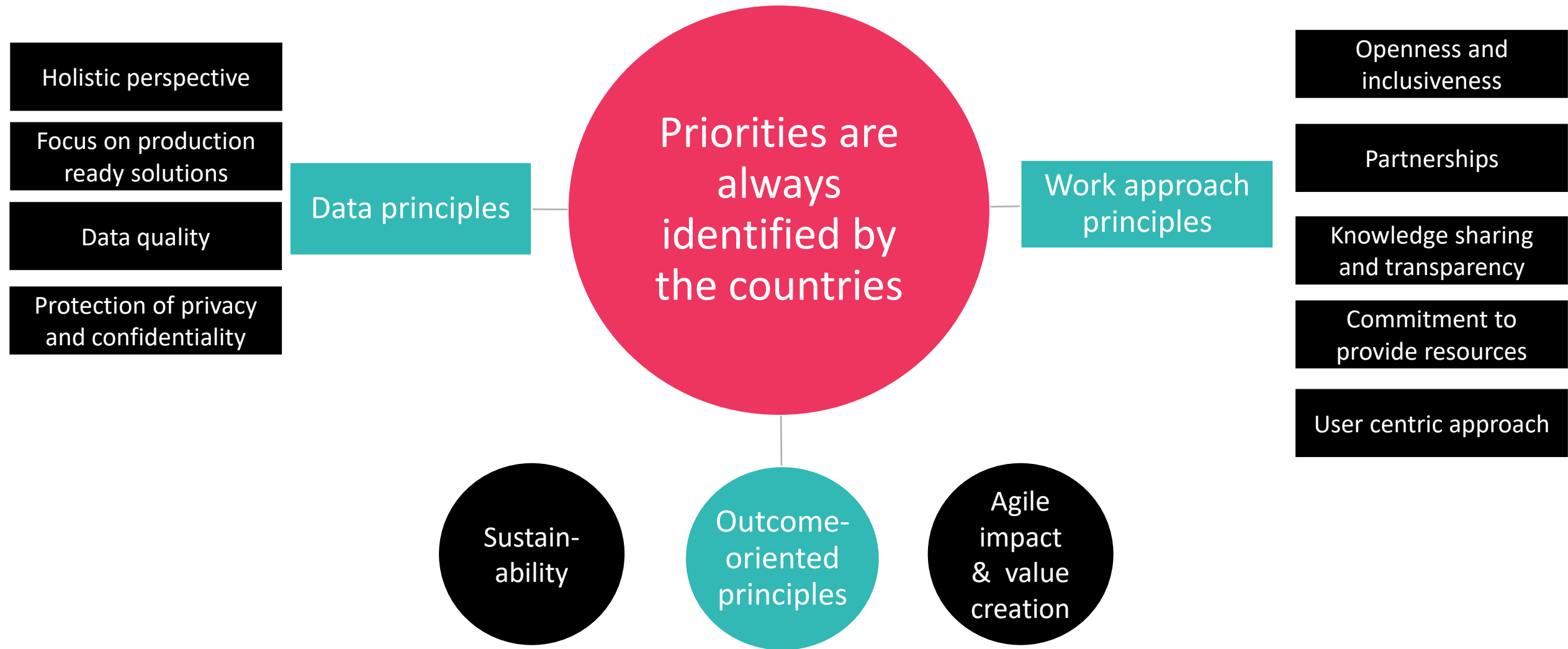


SUSTAINABLE DEVELOPMENT
SOLUTIONS NETWORK

The Data for Now model

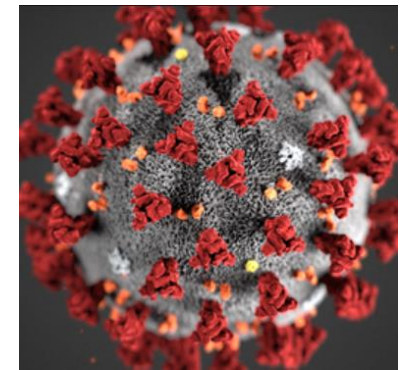


Guiding principles



Data for Now in Senegal

- A participatory approach to identify priorities....
 - Kigali Workshop (November, 2019): The National Office of Statistics (ANSD) prioritized 5 themes
 - Consultations with ANSD and key stakeholders to identify priority indicators for each theme
 - Organization of thematic workshops to identify capacity gaps and technical infrastructure



ANSD and stakeholders have chosen to focus on indicators not yet produced by the National Statistical System and for which data is available.

Key priorities (1/2)



1. Estimate prevalence of food insecurity (FIES approach)
2. Estimate the prevalence of undernourishment
3. Determine the average income of small food producers



These indicators are produced by FAO for the NSS. In collaboration with FAO, D4N is building the capacity of ANSD and NSS members to produce the indicators themselves.



1. Determine the proportion of urban population living in slums
2. Determine the ratio of land use rate to population growth rate



These indicators are produced by UN HABITAT for the NSS. In collaboration with UN HABITAT, D4N is building capacity of ANSD and NSS members to produce the indicators themselves.



1. Determine the number of deaths, missing persons and victims caused by disasters per 100,000 persons

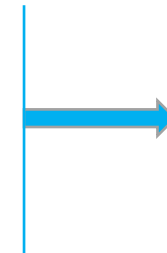


The DPC does not have a data reporting system and tracks this indicator through the national fire brigade records, which do not cover all natural disasters. The D4N project plans to hire a consultant to audit the DPC's data production system and help set up a disaster data reporting system.

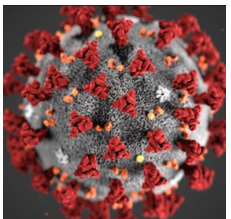
Key priorities (2/2)



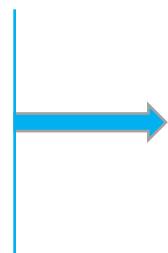
1. Determine the forest area as a proportion of total land area
2. Determine the variation in the extent of water-dependent ecosystems
3. Determine the proportion of the maritime surface covered by marine protected areas



In collaboration with the SEEA project, a training on the calculation of indicators with the artificial intelligence tool ARIES will be organized from November 8 to 12, 2021.



1. Setting up a hub-data platform on COVID-19 in Senegal



The D4N project has hired a consultant to conduct the data cataloging and profiling of the various COVID-19 databases produced by the National Statistical System (SSN) to set up an integrated platform on COVID-19.

Current situation analysis

Data sharing can be improved and digitized to avoid duplication

Several manual steps to extract data requires support from DMIS

Less time to work on statistical analysis

Lack of modern approach to secure data

Target

Build a modern file analysis system for better sharing and access to data

Create value by integrating external tools, such as search engine, data visualization

Create an open data platform with modern API system to share, export, and analyze data

Build a strong security control and monitoring to secure data access

Implement a reference data management process

Partnerships for capacity building of National Statistical System (NNS) in Senegal



- Capacity building on the FIES methodology and the calculation of food insecurity prevalence, September 8-9, 2021
- Capacity building on the methodology of the PoU and indicators 2.3.1 and 2.3.2



Capacity building on the calculation of priority land use indicators



Capacity building on the small area estimation methodology and ARIES tool



DATA
FOR NOW

Accelerating
implementation
of Data For Now



United Nations

Department of Economic and Social Affairs
Statistics



THE WORLD BANK
IBRD • IDA | WORLD BANK GROUP
Development Economics • Data



Global Partnership
for Sustainable
Development Data



SUSTAINABLE DEVELOPMENT
SOLUTIONS NETWORK